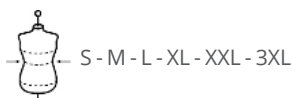




50 % Bio-Baumwolle / 50 % Merinowolle RWS\* 7 gg Strick Körpernaher Schnitt Stoffgleicher Rollsaum am Halsausschnitt Marineblaues Nackenband bei allen Farben 2x2-Strickbündchen an Saum und Ärmelbündchen In Form gestrickt („fully fashioned“) \* Responsible Wool Standard



Größen



Zusätzliche Informationen

Logistik



Herkunftsland



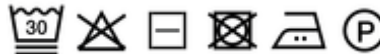
BD - Bangladesch

Zolltarifnummer



61102099

Waschanleitung



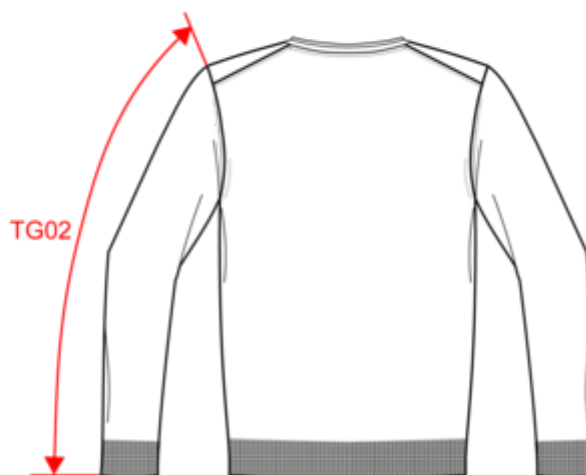
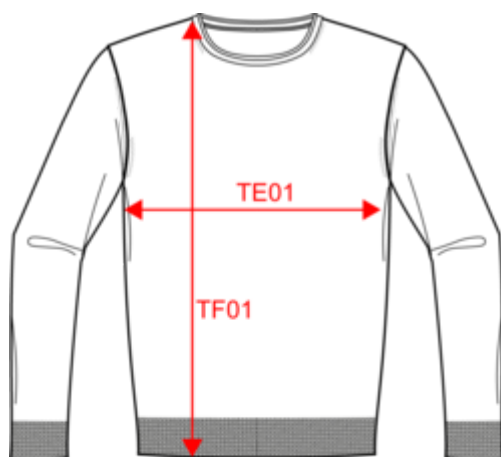
Farben



Zertifikate



Maße



Measurements in cm	S	M	L	XL	XXL	3XL
TE01 - 1/2 chest width at 1.5cm below armhole	50.00	53.00	56.00	59.00	62.00	65.00
TF01 - Total height from HSP	69.00	71.00	73.00	75.00	77.00	79.00
TG02 - Long sleeve length	65.00	66.00	67.00	68.00	69.00	70.00

# NS910

## Herrenpullover aus Merinowolle

### Farbinformationen

**Deep Indigo Heather**

RVB :  
 Pantone C : Based on 426C  
 Pantone TCX : Based on 19-4218TCX

**Gravel Heather**

RVB :  
 Pantone C : Based on 403C  
 Pantone TCX : Based on 17-0205TCX

### Logistik



5



20

Sizes	Width (cm)	Height (cm)	Length (cm)	Net weight (kg)	Gross weight (kg)	Pieces/Box	Pieces/Bundle
S	40.00	38.00	60.00	7.89000	9.89000	20	5
M	40.00	38.00	60.00	8.56000	10.56000	20	5
L	40.00	38.00	60.00	9.26000	11.26000	20	5
XL	40.00	40.00	60.00	9.98000	11.98000	20	5
XXL	40.00	40.00	60.00	10.73000	12.73000	20	5
3XL	40.00	40.00	60.00	11.51000	13.51000	20	5