

# PROACT.®

REFERENCE : PA482

SIZES : S\_M\_L\_XL\_XXL\_3XL

**COMPOSITION :**

Main fabric : Interlock Cool Plus / Polyester - 145 50%polyester  
'Cool Plus' / 50%polyester

**WEIGHT :**

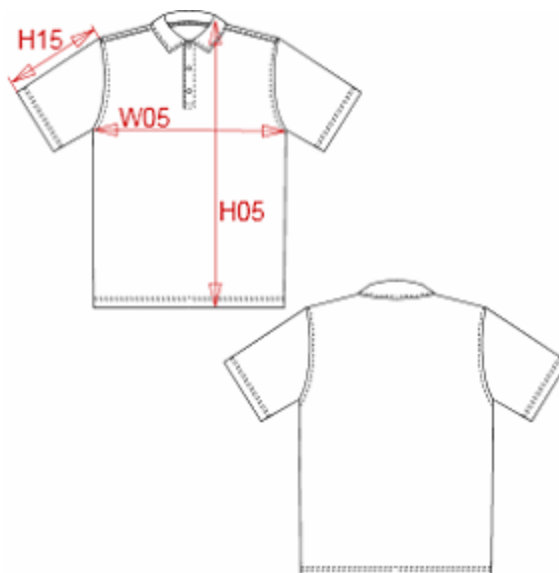
Main fabric : 145 gsm

**FABRIC CONSTRUCTION AND FINISHING :**

Moisture control fabric

**ARTICLE WEIGHT :**

164gr/pc



| DESCRIPTION  |   |                    |       |       |       |       |       |       |  | COLORS      |  | PANTONE SERIGRAPHIE |  |  |  |  |  |
|--|---|--------------------|-------|-------|-------|-------|-------|-------|--|-------------|--|---------------------|--|--|--|--|--|
| <b>Français :</b> Polo respirant à séchage rapide            |   |                    |       |       |       |       |       |       |  | White       |  | White               |  |  |  |  |  |
| <b>English :</b> Performance polo                            |   |                    |       |       |       |       |       |       |  | Red         |  | 200C                |  |  |  |  |  |
| <b>Nederlands :</b> Ademende en sneldrogende polo            |   |                    |       |       |       |       |       |       |  | Black       |  | Black               |  |  |  |  |  |
| <b>Deutsch :</b> Schnell Trockendes-Atmungsaktives Poloheemd |   |                    |       |       |       |       |       |       |  | Navy        |  | 296C                |  |  |  |  |  |
| <b>Español :</b> Polo transpirable de secado rapido          |   |                    |       |       |       |       |       |       |  | Aqua blue   |  | 7690C               |  |  |  |  |  |
| <b>Italiano :</b> Polo asciugatura rapida                    |   |                    |       |       |       |       |       |       |  | Lime        |  | 367C                |  |  |  |  |  |
| <b>Português :</b> Polo de homen de desporto                 |   |                    |       |       |       |       |       |       |  | Orange      |  | 1585C               |  |  |  |  |  |
| <b>Fine grey</b>   |   |                    |       |       |       |       |       |       |  | True Yellow |  | Cool gray 7C        |  |  |  |  |  |
| <b>116C</b>  |   |                    |       |       |       |       |       |       |  |             |  |                     |  |  |  |  |  |
| MEASUREMENT  |   |                    |       |       |       |       |       |       |  |             |  |                     |  |  |  |  |  |
| Description  | Tol +/-   | Tol +/- Taille max | S     | M     | L     | XL    | XXL   | 3XL   |  |             |  |                     |  |  |  |  |  |
| H05 Hauteur totale/total height                              |   |                    | 68,70 | 70,70 | 72,70 | 74,70 | 77,45 | 80,20 |  |             |  |                     |  |  |  |  |  |
| W05 1/2 largeur poitrine/1/2 chest width                     | 3,0%  | 2,5%               | 48,50 | 51,50 | 54,50 | 57,50 | 61,50 | 65,50 |  |             |  |                     |  |  |  |  |  |
| H15 Longueur dessus de manche / sleeve length                |   |                    | 21,35 | 22,35 | 23,35 | 24,35 | 25,85 | 27,35 |  |             |  |                     |  |  |  |  |  |
| CARE LABEL   |   |                    |       |       |       |       |       |       |  |             |  |                     |  |  |  |  |  |
|  |   |                    |       |       |       |       |       |       |  |             |  |                     |  |  |  |  |  |
| PACKING  |   |                    |       |       |       |       |       |       |  |             |  |                     |  |  |  |  |  |
| Box  | 25 pcs / box<br>S => L:56cm W:39cm H:16cm GW:5.30kg NW:3.80kg<br>M => L:56cm W:39cm H:16cm GW:5.60kg NW:4.10kg<br>L => L:56cm W:39cm H:16cm GW:5.70kg NW:4.20kg<br>XL => L:62cm W:39cm H:18cm GW:6.20kg NW:4.50kg<br>XXL => L:62cm W:39cm H:18cm GW:6.60kg NW:4.90kg<br>3XL => L:62cm W:39cm H:18cm GW:6.80kg NW:5.10kg |                    |       |       |       |       |       |       |  |             |  |                     |  |  |  |  |  |