

KARIBAN

REFERENCE : K616

SIZES : XS_S_M_L_XL_XXL_3XL

COMPOSITION :

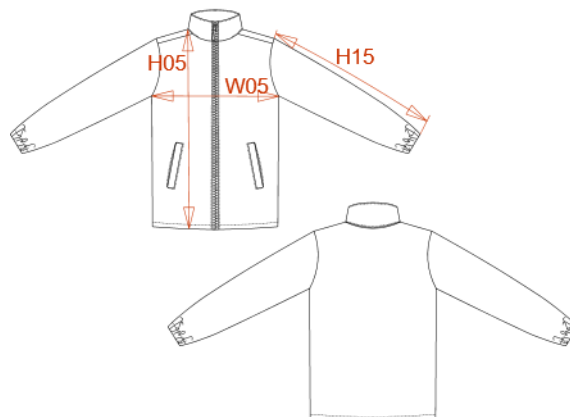
Main fabric : Polyester 70 100%polyester

WEIGHT :

Main fabric : 70 gsm

ARTICLE WEIGHT :

240 gr/pc



| DESCRIPTION |
|--|
| Français : Coupe-vent non doublé |
| English : Windbreaker |
| Nederlands : Ongevoerde windbreaker |
| Deutsch : Windbreaker |
| Español : Cortaviento sin forro |
| Italiano : Windbreaker |
| Português : Windbreaker |

| COLORS | PANTONE SERIGRAPHIE |
|------------------|---------------------|
| Black | Black |
| Navy | 433C |
| Red | 200C |
| White | White |
| Orange | 1585C |
| Forest green | 5605C |
| Sky blue | 2169C |
| Light royal blue | 653C |
| Yellow | 1235C |
| Lime | 367C |
| Tropical blue | 7468C |

| MEASUREMENT | | | | | | | |
|--|----|-------|----|-------|----|-------|-----|
| Description | XS | S | M | L | XL | XXL | 3XL |
| H05 (M) Hauteur totale / Total height | 75 | 77 | 79 | 81 | 83 | 85 | 87 |
| W05 (M) 1/2 largeur poitrine à 1.5cm de l'emmanchure / 1/2 chest width at 1.5cm below armhole | 55 | 58 | 61 | 64 | 67 | 70 | 73 |
| H15L (M) Longueur manche longue / Long sleeve length | 60 | 61,50 | 63 | 64,50 | 66 | 67,50 | 69 |

| CARE LABEL | | | | |
|------------|--|--|--|--|
| | | | | |

| PACKING | |
|---------|--|
| Box | 50 pcs/box XS => L:60cm W:40cm H:29cm NW:10.6kg GW:12.8kg S => L:60cm W:40cm H:29cm NW:11.3kg GW:13.5kg M=> L:60cm W:40cm H:29cm NW:12kg GW:14.2kg L => L:60cm W:40cm H:31cm NW:12.8kg GW:15kg XL => L:60cm W:40cm H:31cm NW:13.5kg GW:15.6kg 2XL => L:60cm W:40cm H:31cm NW:14.1kg GW:16.2kg 3XL => L:60cm W:40cm H:31cm NW:14.7kg GW:16.8kg |